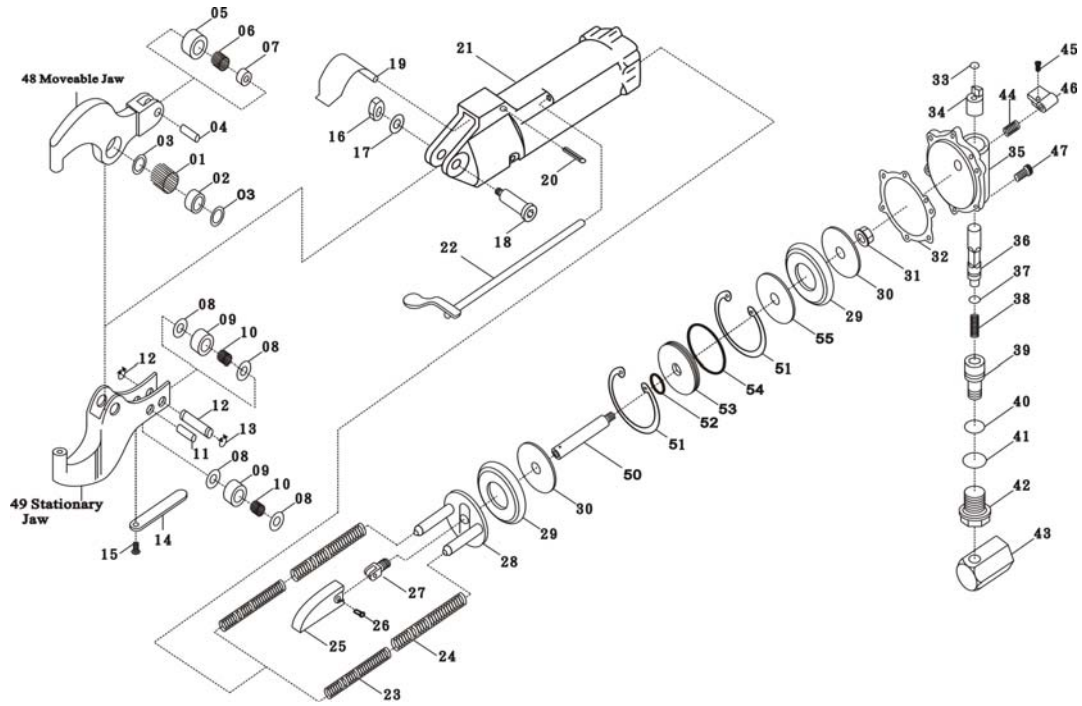


# COMPRESSION RIVETER



MODEL SA-SC3004B

No.	Part Name	Q'ty	No.	Part Name	Q'ty
01	Needle Roller	35	30	Piston Leather Plate	2
02	Pivot Bearing	1	31	Piston Rod Nut	1
03	Pivot Bearing Washer	2	32	Cylinder Head Gasket	1
04	End Roller Bearing Shaft	1	33	O-Ring(Brass Bushing)	1
05	Outer Race End Bearing	1	34	Throttle Valve Bushing	1
06	Needle Roller	29	35	Cylinder Head	1
07	Bearing Inner Race	1	36	Throttle Valve	1
08	Roller Thrust Washer	4	37	O-Ring	1
09	Roller Plate	2	38	Throttle Valve Spring	1
10	Needle Roller	40	39	Swivel	1
11	Roller Shaft, Short	1	40	O-Ring	1
12	Roller Shaft, Long	1	41	O-Ring	1
13	Arc Retainer Ring	2	42	Swivel Nut	1
14	Roller Guard	1	43	Elbow	1
15	Guard Screw	1	44	Spring	1
16	Bearing Bolt Nut	1	45	Screw	1
17	Bearing Bolt Washer	1	46	Lever Arm	1
18	Bearing Bolt	1	47	Allen Cap Screw	6
19	Return Spring, Heavy-Duty	1	48A	Moveable Jaw (for SA-SC3004A)	1
20	Return Spring Pin	1	48B	Moveable Jaw (for SA-SC3004B)	1
21	Cylinder 60A	1	49A	Stationary Jaw (for SA-SC3004A)	1
22	Throttle Valve Lever	1	49B	Stationary Jaw (for SA-SC3004B)	1
23	Piston Return Spring	2	50	Piston Rod (TA)	1
24	Piston Return Spring	2	51	Retaining Ring	2
25	Wedge Long "A"	1	52	O-Ring	1
26	Wedge Spacer Rivet	1	53	Separator	1
27	Piston Fork / Short	1	54	O-Ring	1
28	Piston	1	55	Tandem Piston	1
29	Piston Leather	2			